



**Lumascap Lighting Industries Pty Ltd**  
 38-44 Enterprise Street, Cleveland, QLD 4163, Australia  
 PO Box 1875, Cleveland D.C., QLD 4163, Australia  
 T 07 3286 2299  
 F 07 3286 6599  
 E sales@lumascap.com.au  
 W www.lumascap.com.au

# INSTALLATION INSTRUCTIONS

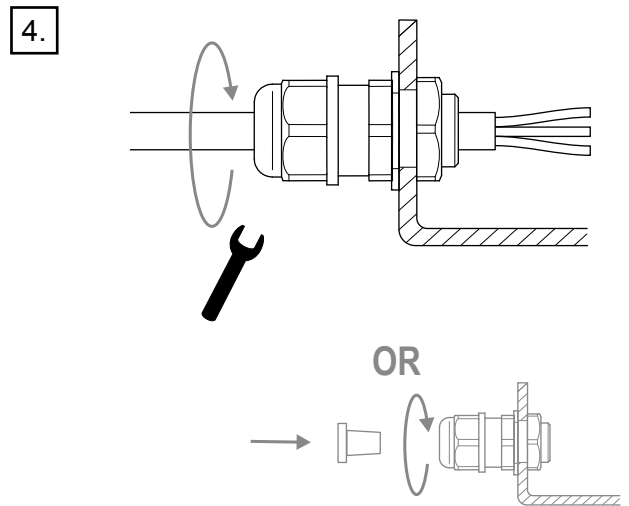
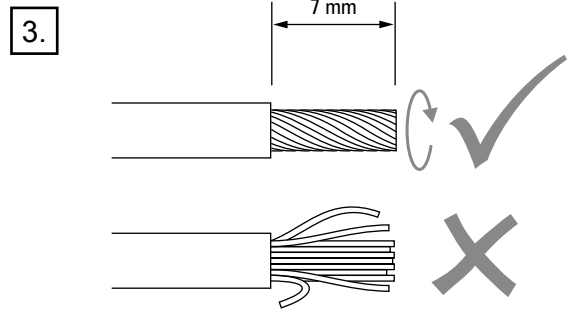
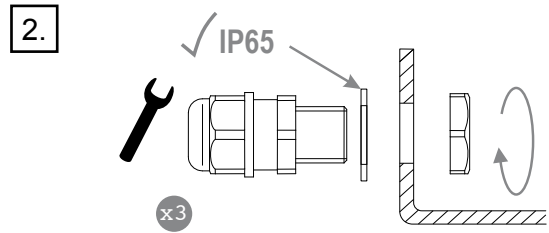
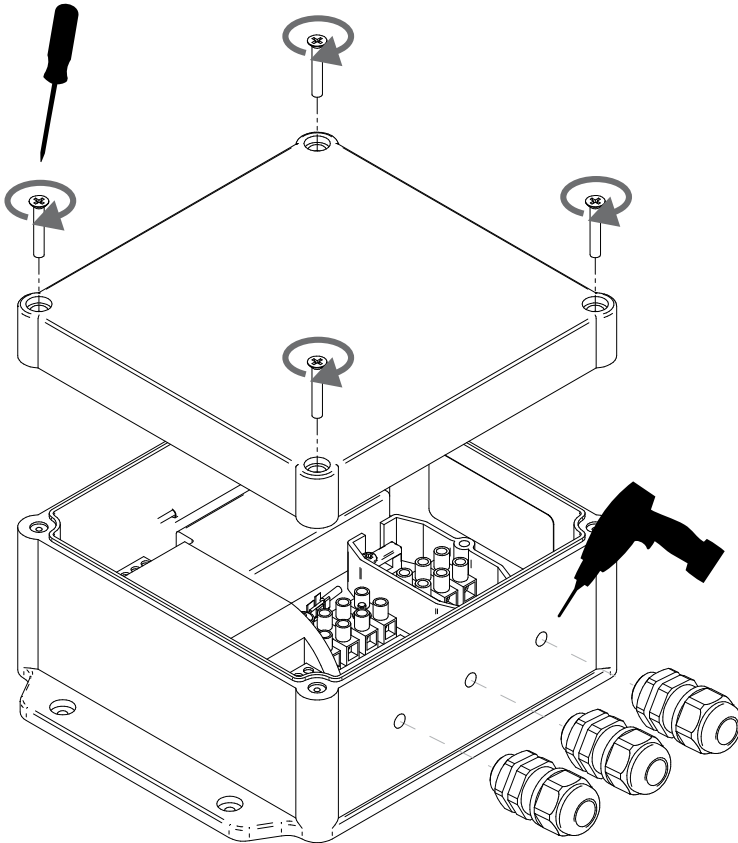
A.C.N. 0105 72 773

LS6125-2 0-10 V PWM Converter  
 100-240 V AC  
 10 W maximum  
 IP65  
 Ta 50 °C

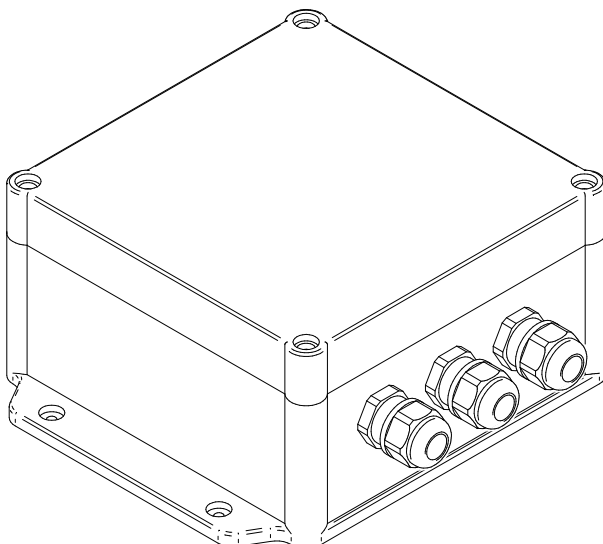
LUMASCAPE

## LS6125-2 0-10 V PWM Converter

- 1. Install glands and connect wires**  
 Drill holes to install glands as required.  
 Three glands are included with the enclosure.  
 See wiring diagram in back for details.

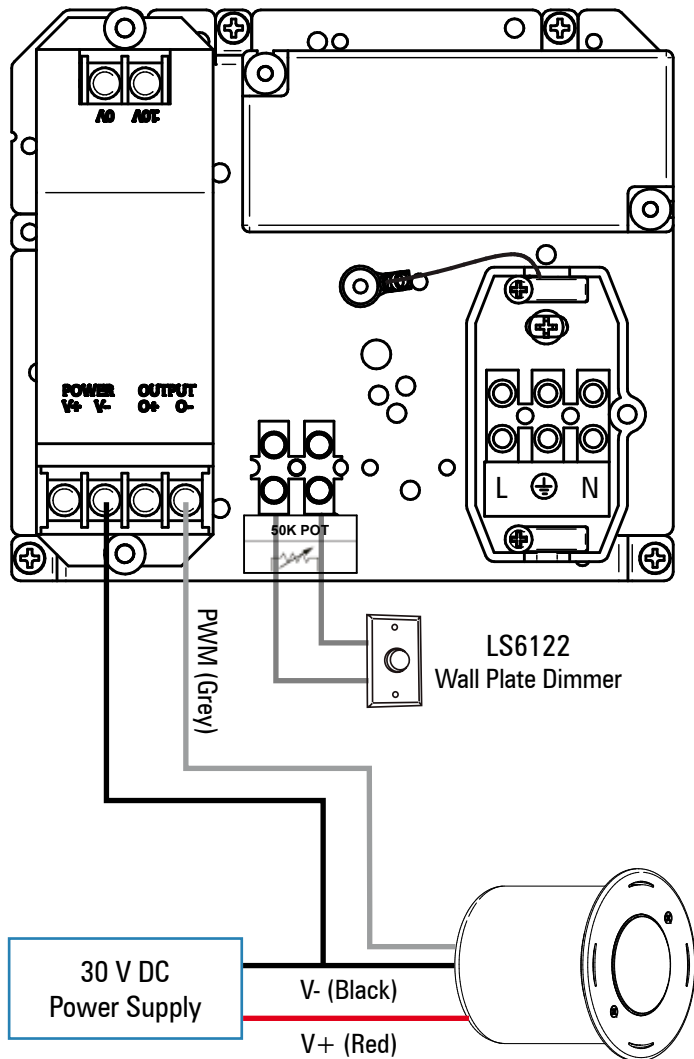


### Finished Appearance

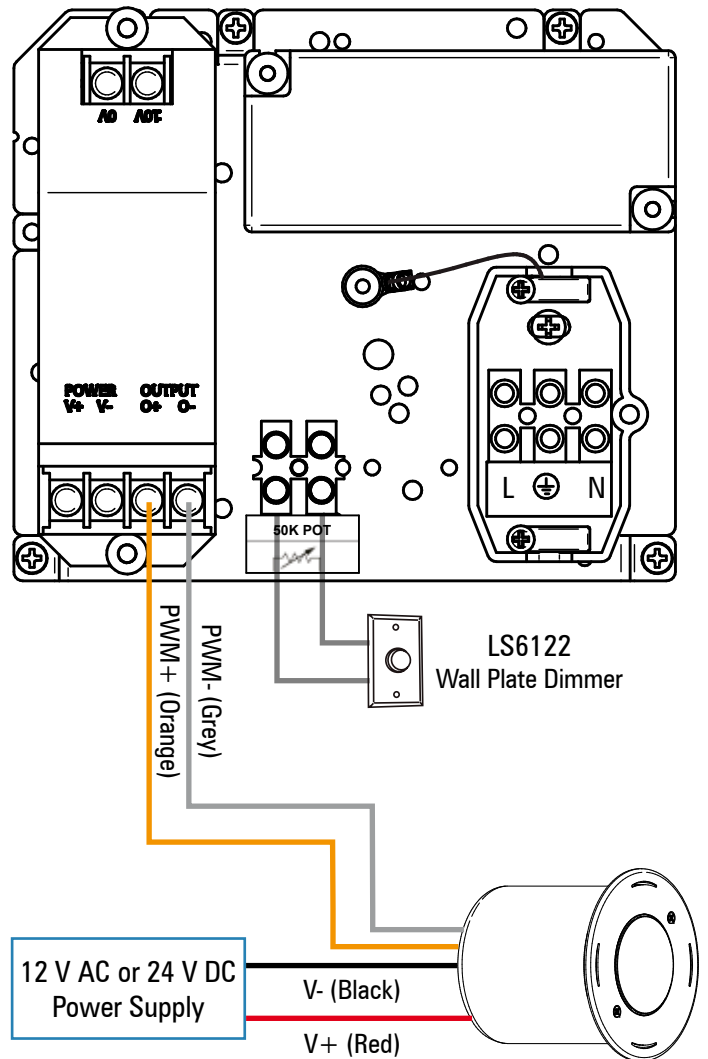


## 5. Wiring Configuration

### Wall Plate Dimmer Setting for LS333ANS-2COB Only



### Wall Plate Dimmer Setting for all other luminaires



### Questions?

Call +61 7 3286 2299

Email [sales@lumascope.com.au](mailto:sales@lumascope.com.au)

[www.lumascope.com.au](http://www.lumascope.com.au)

## SAFETY INSTRUCTIONS

**WARNING - To reduce the risk of FIRE or INJURY:**

1. Luminaires and transformers to be installed by licensed electrical contractors.
2. Luminaires to be used for intended purpose only.
3. Do not operate the luminaires with a missing or damaged parts.
4. Use only genuine Lumascope parts to replace damaged or missing components.
5. Refer to instructions for installation and operating requirements.
6. Ensure installation complies with local regulations

**Voltage insulation test (megger) will permanently damage product and will void warranty.**

**SAVE THESE INSTRUCTIONS.**

# Dimensions

